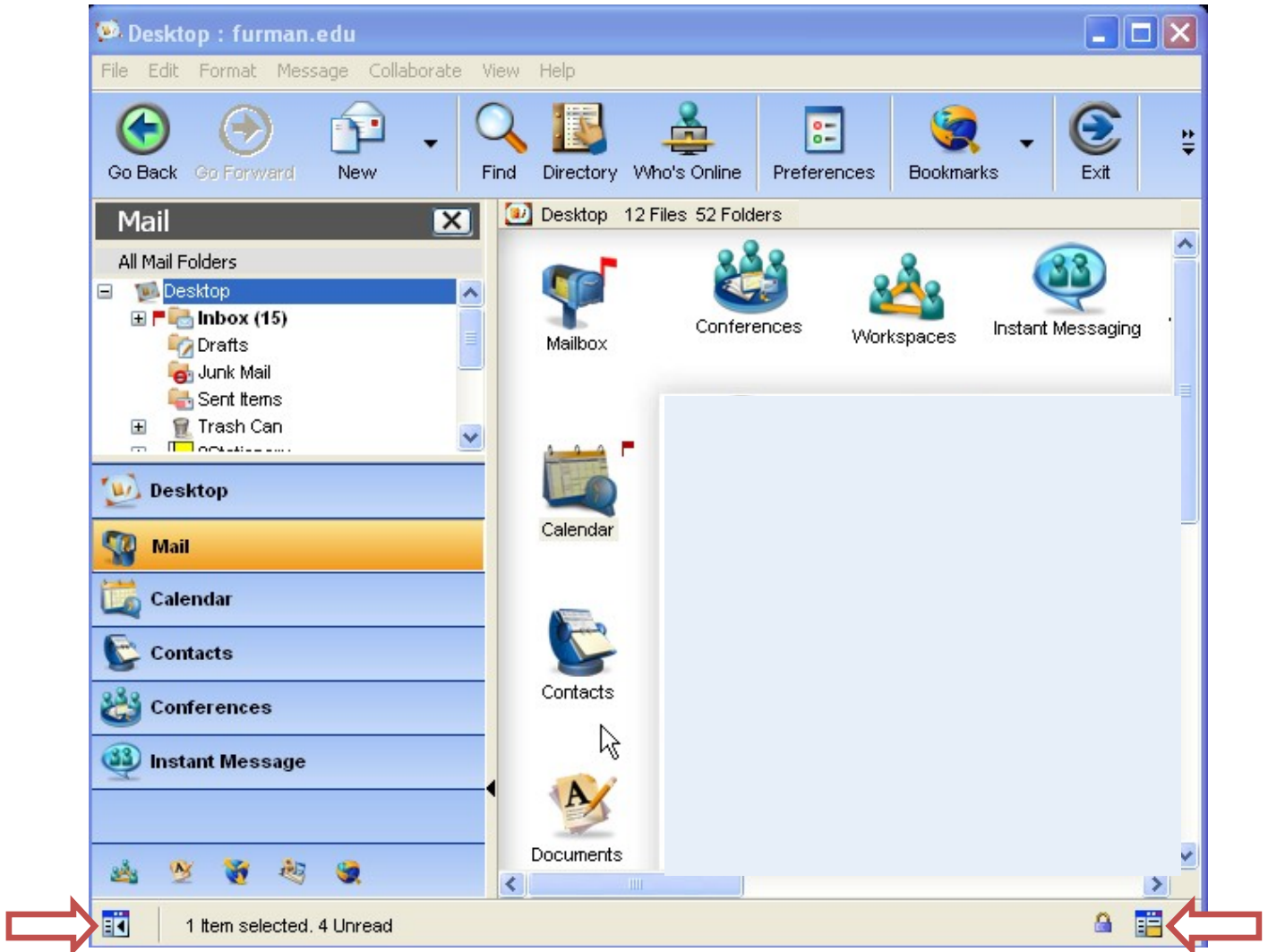


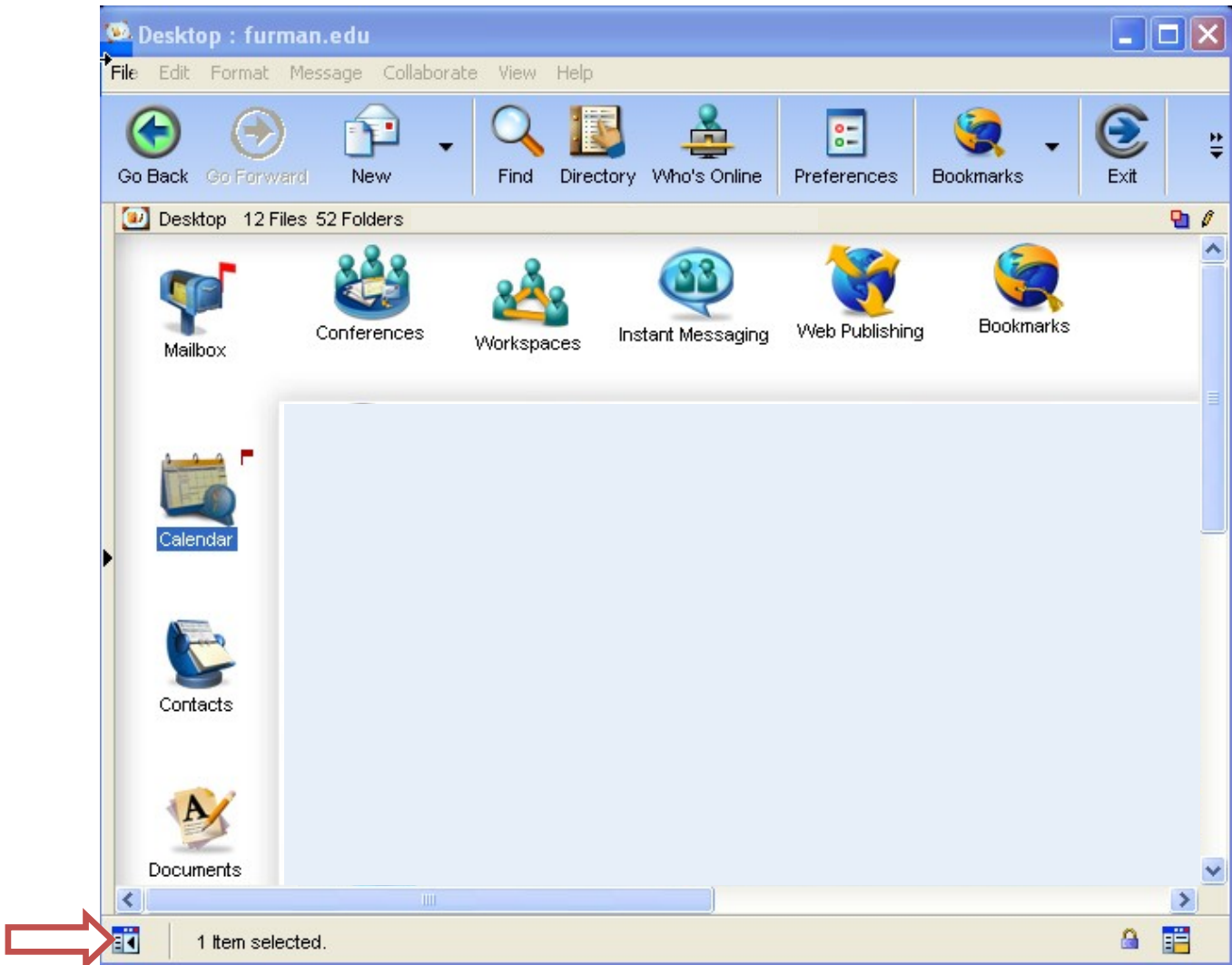
Desktop Changes:

Client Interface: One of the biggest changes in FirstClass is the client interface. Users now have a single default explorer interface. Although there is not a preference to change the way the client looks, users can make changes by using the new toggle pane buttons.

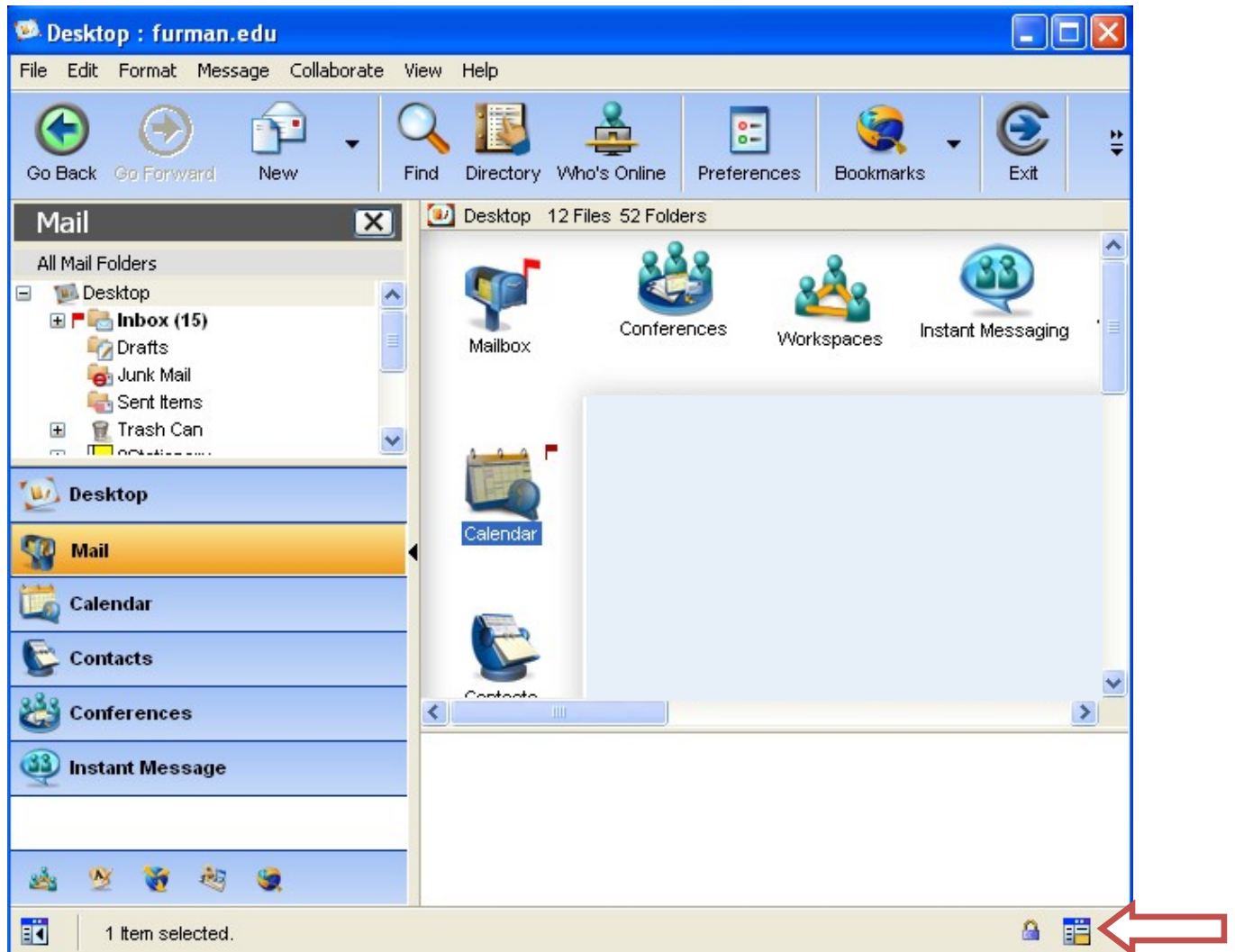
(Default Explore Interface)



(Classic FirstClass Interface) To see this view use the toggle pane button in the lower left corner, this button turns off the left explore pane and leaves the user with the desktop view. *Note that some instructions may call for using the explore pane.*



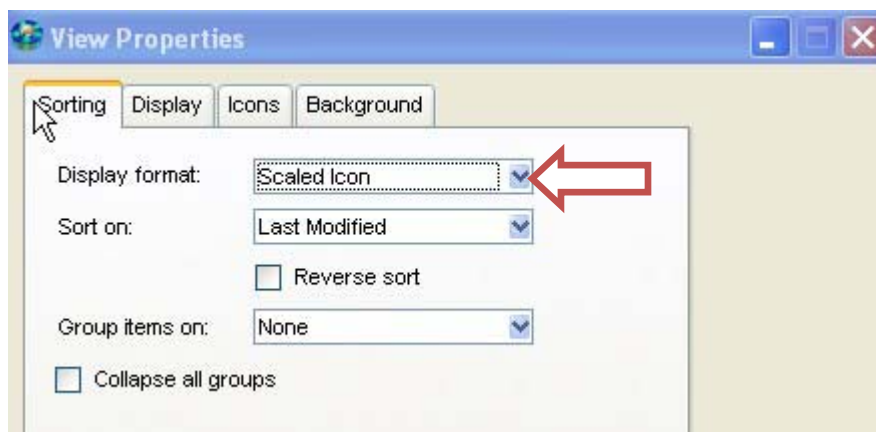
(Secondary Right View Pane) To add a secondary lower right or extra right view pane, use the toggle pane button in the lower right corner of the screen. Pressing the button once will give a lower right pane; pressing it, a second time will give a second pane to the right.



Custom Explore Bar: Users can customize their explore bar by right clicking the bar and choosing either “Customize Toolbars...” or “Remove Button”.

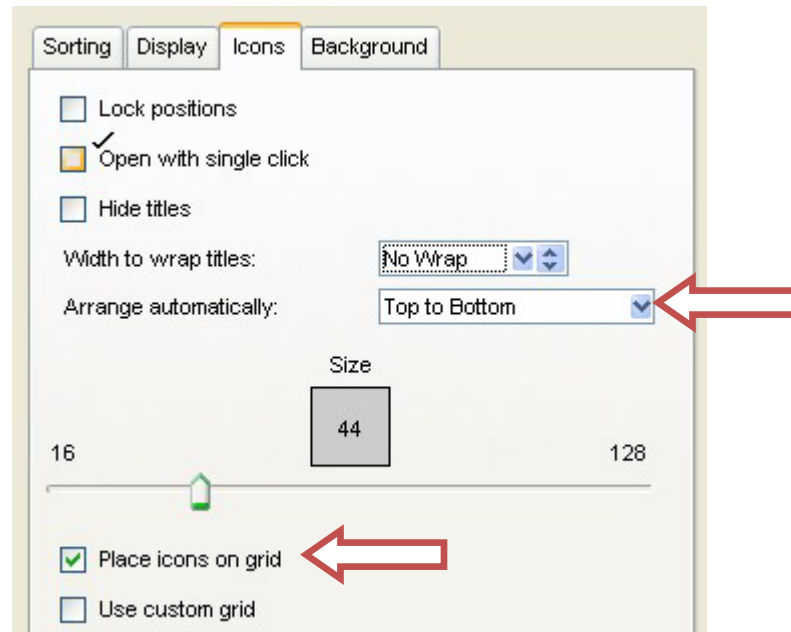


Icon Size: Another major view change is the size of FirstClass icons, new in FirstClass is the ability to scale the size of icons. To use scaled icons open the View menu and choose “Change Display Properties”. On the sorting tab, there is the option for “Display format:” change this to “Scaled Icon”.



Next, click the “Icons” tab and use the sliding “Size” bar to increase or decrease the size of all icons.

Icon Placement: Users now have the ability to globally change the placement of desktop icons on the screen. Users can choose to have their icons automatically arrange top to bottom or left to right, and users can choose to place icons on an invisible grid to keep them lined up.



Trash Can: Users no longer have to change their view to show deleted items, all deleted items can now be viewed in the Trash Can on the FirstClass desktop.

