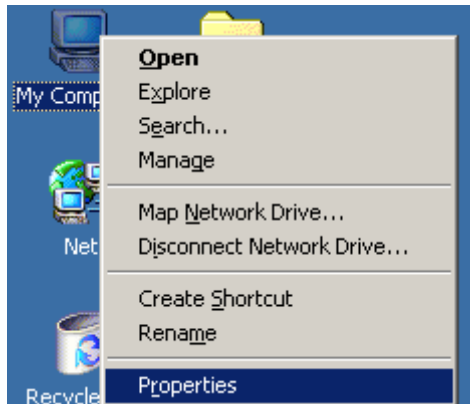


## *Finding System Information In Microsoft Windows*

1) To find system information you will need to locate My Computer on the desktop. Once you have located the icon click it once using the right side of the mouse. When you right click the icon a menu will appear. The bottom option will be properties. Left Click Properties to open the properties screen.



2) Once on the properties screen you will see all the system information. The system information screen will include: the version of windows, who the machine is registered to, the processor type, and finally the amount of ram in the machine.

